

**ESTIMATE COST FOR 01 ADDITIONAL CLASS ROOM AND ART AND CRAFT ROOM FOR  
KACHUA HIGH SCHOOL UNDER- BHANGAR BLOCK, , DIST.- SOUTH 24 PARGANAS**

NOTE : The estimate has been prepared as per PWD (WB) schedule of rates for building works materials & labour effective from 1st November, 2017.

Sl. No	Description of Items	Quantity		Rate (Rs.)	Unit	Amount (Rs.)
1	Brick work with 1st class bricks in cement mortar (1:6)					
	(b) In superstructure, ground floor	27.200	Cu.m.	4762.00	Cu.m.	129526.40
2	125 mm. thick brick work with 1st class bricks in cement mortar (1:4) in ground floor.	44.650	Sq.m.	724.00	Sq.m.	32326.60
	PWD SCH- P- , It-					
3	Ordinary Cement concrete (mix 1:1.5:3) with graded stone chips (20 mm nominal size) excluding shuttering and reinforcement if any, in ground floor as per relevant IS codes. Pakur Variety	22.513	Cu.m.	6,372.62	Cu.m.	143466.79
	As per attached sheet of rate analysis					
4	Reinforcement for reinforced concrete work in all sorts of structures including distribution bars, stirrups, binders etc initial straightening and removal of loose rust (if necessary), cutting to requisite length, hooking and bending to correct shape, placing in proper position and binding with 16 gauge black annealed wire at every intersection, complete as per drawing and direction. (a) For works in foundation, basement and upto roof of ground floor/upto 4 m (i) Tor steel/Mild Steell. SAIL/ TATA/RINL	2.121	M. Ton	58249	M. Ton	123530.09
	PWD SCH- P- , It-					
5	Hire and labour charges for shuttering with centering and necessary staging upto 4 m using approved stout props and thick hard wood planks of approved thickness with required bracing for concrete slabs, beams and columns, lintels curved or straight including fitting, fixing and striking out after completion of works (upto roof of ground floor). (When the height of a particular floor is more than 4 m the equivalent floor height shall be taken as 4 m and extra for works beyond the initial 4 m ht. shall be allowed under 12 (e) for every 4 m or part thereof). 25 mm to 30 mm thick wooden shuttering as per decision & direction of Engineer-In-Charge.	219.430	Sq.m.	335.00	Sq.m.	73509.05
	PWD SCH- P-27, It- 12 (a)					

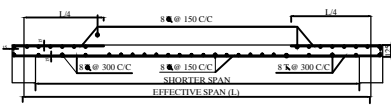
Sl. No	Description of Items	Quantity		Rate (Rs.)	Unit	Amount (Rs.)
6	Artificial stone in floor, dado, staircase etc with cement concrete (1:2:4) with stone chips, laid in panels as directed with topping made with ordinary or white cement (as necessary) and marble dust in proportion (1:2) including smooth finishing and rounding off corners including raking out joints or roughening of concrete surface and application of cement slurry before flooring works using cement @ 1.75 kg/sq.m all complete including all materials and labour. In ground floor. 3 mm. thick topping (High polishing grinding on this item is not permitted with ordinary cement). Using grey cement. 25 mm. thick	77.130	Sq.m.	303.00	Sq.m.	23370.39
	PWD SCH- P-41, It- 3(ii)					
	Lifting charge @1.5 each floor up to 4th floor	77.13	Sq.m	4.60		
7	Plaster (to wall, floor, ceiling etc.) with sand and cement mortar including rounding off or chamfering corners as directed and raking out joints including throating, nosing and drip course, scaffolding/staging where necessary (Ground floor).[Excluding cost of chipping over concrete surface].					
	(i) With 1:6 cement mortar. 20 mm thick plaster	226.56	Sq.m.	167.00	Sq.m.	37835.52
	(ii) With 1:6 cement mortar. 15 mm thick plaster	258.66	Sq.m.	145.00	Sq.m.	37505.70
	(iii) With 1:4 cement mortar					
	10 mm thick plaster.	110.19	Sq.m.	135.00	Sq.m.	14875.65
	PWD SCH- P- It-					
8	Neat cement punning about 1.5 mm. thick in wall, dado, window, sills, floor, drain etc. NOTE : Cement 0.152 cu.m. per 100 sq.m.	41.950	Sq.m.	38.00	Sq.m.	1594.10
	PWD SCH- P- , It-					
9	(a) M.S.or W.I. Ornamental grill of approved design joints continuously welded with M.S, W.I. Flats and bars of windows, railing etc. fitted and fixed with necessary screws and lugs in ground floor. (Add extra @ 1% for each addl. floor upto 4th floor and @ 1.25% for each addl. floor above 4th floor). Grill weighing above 10 Kg./sq.mtr and up to 16 Kg./sq. mtr	2.540	Qtl.	7238.00	Qtl.	18384.52
	PWD SCH- P-78, It- 10(a)(i)					
10	Wood work in door and window frame fitted and fixed in position complete including a protective coat of painting at the contact surface of the frame exluding cost of concrete, Iron Butt Hinges and M.S clamps. (The quantum should be correted upto three decimals). Sal : Local.	0.193	Cu.m.	83218.00	Cu.m.	16061.07
	PWD SCH- P- , It-					

Sl. No	Description of Items	Quantity		Rate (Rs.)	Unit	Amount (Rs.)
11	Panel shutters of door and window, as per design (each panel consisting of single plank without joint), including fitting and fixing the same in position but excluding the cost of hinge and other fittings. In ground floor. (In case of non-supply of single plank, penal rate of reduction of 20% will be made). 35mm thick shutters with 19mm thick panel of size 30to 45 Cm. Sishu, Gamar, Champ Badam Bhole, Mogra, Hallak	12.040	Sq.m.	2259.00	Sq.m.	27198.36
	PWD SCH- P-105, It-84(iii)(b)					
12	Supplying, fitting and fixing M.S. clamps for door and window frame made of flat bent bar, end bifurcated with necessary screws etc. by cement concrete(1:2:4) as per direction. (Cost of concrete will be paid separately). 40mm X 6mm, 250mm Length. (The concreting will have to be done for equivalent thickness of 2 layers of brick work and for the entire width of the wall. No deduction on brick work will be made).	36	Nos	33	Each	1188.00
	PWD SCH- P It-					
13	Iron butt hinges of approved quality fitted and fixed with steel screws, with ISI mark. (i)100mm. X 58mm. X 1.90mm. (Add Extra 30% for Oxidised Fittings)	36	Nos	67.60	Each	2433.60
	PWD SCH- P-91, It- 20(vii) Rs. 52.00x130/100= Rs.67.60					
14	Anodised aluminium barrel / tower / socket bolt (full covered) of approved manufactured from extruded section conforming to I.S. 204/74 fitted and fixed with cadmium plated screws: (i) 150mm long x 10mm dia. bolt.	12	Nos	73.00	Each	876.00
	PWD SCH- P- , It- )					
15	Iron hasp bolt of approved quality fitted and fixed complete (oxidised) with 16mm dia rod with centre bolt and round fitting. 250mm long.	2	Nos	184.00	Each	368.00
	PWD SCH- P- , It-					
16	Anodised aluminium D-type handle of approved quality manufactured from extruded section conforming to I.S. specification (I.S. 230/72) fitted and fixed complete: With continuous plate base (Hexagonal / Round rod). 150 mm grip x 10 mm dia rod.	12	Nos	111.00	Each	1332.00
	PWD SCH- P-100, It- 65(vi)					
17	Supplying & fixing 125mm long wooden buffer block. With Sal : Siliguri.	4	Nos	65.70	Each	262.80
	PWD SCH- P-96, It-44(i) As per page A1 Rs69.00x100/105=Rs.65.70					
18	Supplying , fitting and fixing hinge cleat in position excluding the cost hinge and other fittings with 75mm iron Butt-hinge. Sal : Siliguri.	4	Nos	44.00	Each	176.00
	PWD SCH- P-90, It- 16(b)(i)					

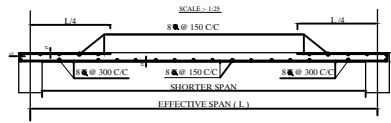
Sl. No	Description of Items	Quantity		Rate (Rs.)	Unit	Amount (Rs.)
19	Colour washing with any shade with Stainers, as required including cleaning and smoothening surface thoroughly :					
	(i) External surface (Ground floor). Two coats (on new works only). Yellow, pink.	251.25	Sq.m.	2246.00	%Sq.m.	5643.08
	(ii) Internal surface (All floors). Two coats (on new works only). Other than yellow, pink.	159.82	Sq.m.	2139.00	%Sq.m.	3418.55
	PWD SCH- P-155, It- 5(i)(b)(i)&(ii)(b)(ii)					
20	(a) Priming one coat on timber or plastered surface with synthetic oil bound primer of approved quality including smoothening surfaces by sand papering etc.	33.51	Sq.m.	29.00	Sq.m.	971.79
	(b) Priming one coat on steel or other metal surface with synthetic oil bound primer of approved quality including smoothening surfaces by sand papering etc.	8.94	Sq.m.	38.00	Sq.m.	339.72
	PWD SCH- P-162, It- 7(a),(b)					
21	Painting with best quality synthetic enamel paint of approved make and brand including smoothening surface by sand papering etc. including using of approved putty etc. on the surface, if necessary :					
	(a) On timber or plastered surface :With super gloss (hi-gloss) - Two coats (with any shade except white)	33.51	Sq.m.	79.00	Sq.m.	2647.29
	(b) On steel or other metal surface :With super gloss (hi-gloss) - Two coats (with any shade except white)	8.94	Sq.m.	81.00	Sq.m.	724.14
	PWD SCH- P-162, It-8(A)(a)(iv)&(b)(iv)					

Total amount of first floor	699565.21
Total amount of Groun floor	1020348.92
Total amount of first floor	1719914.13
Add 12% GST	222844.00
electrict purpose	18951.28
furniture	161000
	2,122,709.41
contengency .65%	13,791.00
Total Rs	2,136,500.41
Say rs	2136500

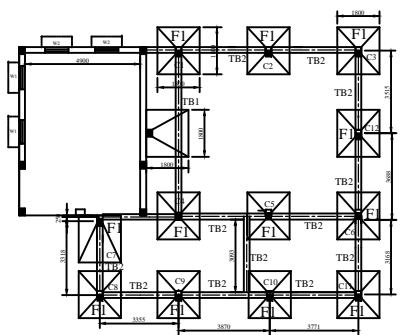
**Rupees : Twenty one lakhs thirty six thousand five hundred Only**



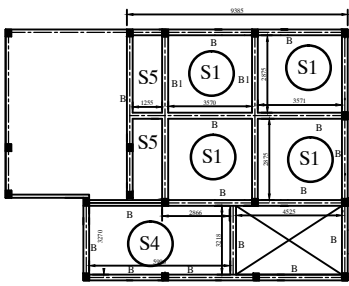
DETAIL OF SLAB (S1)



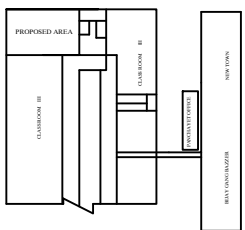
DETAIL OF SLAB (S2)



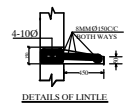
LAY OUT PLAN



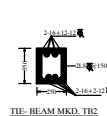
ROOF AND BEAM LAY OUT PLAN



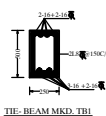
SITE PLAN NOT TO SCALE



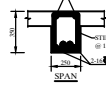
DETAILS OF LINTLE



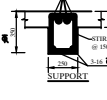
DETAILS OF TIE BEAM



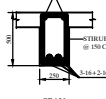
DETAILS OF TIE BEAM



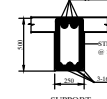
DETAILS OF ROOF BEAM



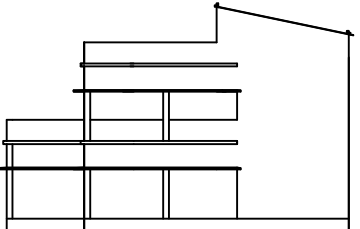
DETAILS OF ROOF BEAM



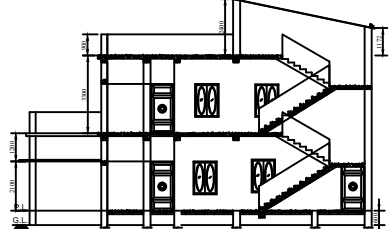
DETAILS OF ROOF BEAM



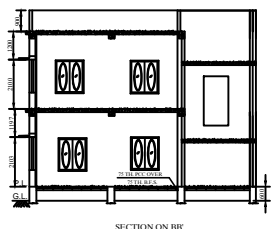
DETAILS OF ROOF BEAM



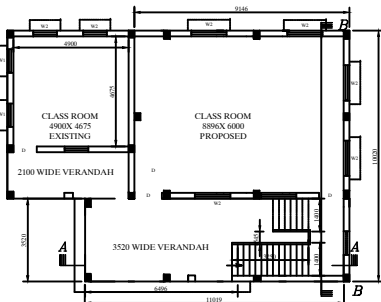
FRONT ELEVATION



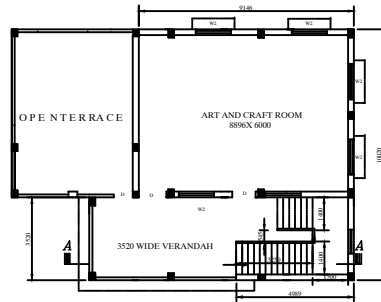
SECTION ON AA



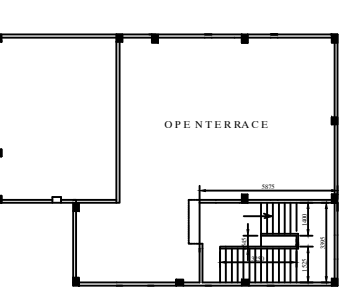
SECTION ON BB



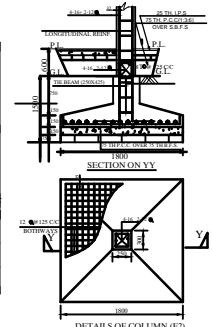
GROUND FLOOR PLAN



FIRST FLOOR PLAN



ROOF PLAN



DETAILS OF COLUMN (P2)

SCHEDULE OF R.C.C. COLUMNS & R.C.C. TIE BEAMS		
COLUMNS	SIZE & REINF.	TIE BEAM (A & B)
C1-C10	250X300 4-16 @ 2-12	TB1 250X300 5-16 @ 2-16
		TB2 250X300 4-16 @ 2-12
USE 8mm BINDER @ 125 C/C		

SCHEDULE OF R.C.C. FLOOR AND ROOF BEAMS		
BEAM MKD.	SIZE OF BEAM	REINFORCEMENT AT SUPPORT
B	250X300	2-16 @ 2-12
B1	250X300	2-16 @ 2-16
USE 8mm STIRRUPS @ 125 C/C		

SCHEDULE OF ISOLATED FOUNDATIONS		
FOUNDATION MARKING AND SIZE	ASSOCIATED COLUMNS	THICKNESS (MM)
F1 (1800X1800)	C1, C11	150
		250
		12 @ 125 C/C

## STATEMENT OF THE PLAN PROPOSAL.

### DETAILS OF PREMISES.

PROPOSED BUILDING PLAN (ADDITIONAL CLASS ROOM AND ART AND CRAFT ROOM) UNDER RMSA FOR KACHUA HIGH SCHOOL AT MOUZA - KACHUA J.L.NO. - 46, KHATIAN NO. - 1195 RS., DAG NO. - 375,376 UNDER BHANGAR BLOCK, DIST. - SOUTH 24 PARGANAS

### AREA STATEMENT

PROPOSED GROUND FLOOR COV. AREA :- 98.46 SQM.

PROPOSED GROUND FLOOR COV. AREA :- 98.46 SQM.

PROPOSED COLOUR :-

SCALE :- 1:100

### DOORS & WINDOWS SCHEDULE

	MASONRY OPENING (MM)	FRAME SIZE (IN MM)	THICKNESS OF SHUTTER (IN MM)	TYPE
D	1000-2100	75-76	15	FULLY paneled
W	1500-1200	60-75	20	FULLY GLAZED

### DETAILS SPECIFICATION OF BUILDING.

ALL DIMENSIONS ARE IN MILLIMETER UNLESS MENTIONED.  
SCALE: 1:100, UNLESS MENTIONED.  
ALL EXTERNAL WALLS 250 MM THICK EXCEPT OTHERWISE MENTIONED  
CONSTRUCTION WITH CEMENT SAND MORTAR (1:4).  
ALL PARTITION (INTERNAL) WALLS 125 & 75MM THICK, CONSTRUCTION WITH CEMENT SAND MORTAR (1:4).  
GRADE OF CONCRETE IS M 20 CONFORMING IS 456:2000.  
GRADE OF STEEL SHALL BE T.M.T BARS Fe-500.  
PLAIN CEMENT CONCRETE SHALL BE (1:3:6) WITH PICKED KIRBA.  
20MM THICK PLASTER (INTERIOR & EXTERIOR) OVER BRICK WORK, WITH (1:3) CEMENT SAND MORTAR.  
10MM THICK PLASTER (INTERIOR & EXTERIOR) OVER CONCRETE WORK WITH (1:3) CEMENT SAND MORTAR.  
ALL PROJECTED CHAJJA SHALL BE 450MM WIDE & 150MM BEARING WITH EACH SIDE OF THE OPENING.

SIGNATURE OF TPO/DM	SIGNATURE OF PRESIDENT
SIGNATURE OF ENGINEER	OFFICE USE